



Transportation Engineering and Safety Conference

CENTRE REGION FIRE PROTECTION

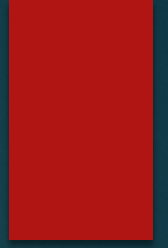
Today's Staff

- Francis (Rusty) Schreiner, Assistant Chief
- Mark Jermusyk, Engine Captain and NREMT-P
- Rob Nese, Lieutenant
- Steve Bair, Centre Region Fire Director/Chief of Department

Regional Fire Protection Program aka Alpha Fire Company

- Regional Provider: 5 Municipalities + PSU
- Approximately 1300 Incidents Annually
- 93,000 Persons Protected
- 104 Square Miles
- Approx 17 Miles of Expressway
- Urban, Suburban, Rural Traffic Settings

Centre LifeLink EMS



- ❑ Regional Provider
- ❑ Approximately 7,000 Responses Annually
- ❑ BLS and ALS Services
- ❑ Seven Emergency Ambulances

TIMS Experience

- ❑ USDOT Trained; T-t-T
- ❑ Development Group for PA Fire Academy Program
- ❑ Trainer for New Instructors
- ❑ Embraced by Our Department

TIMS Experience

December 2015



TIMS Experience

January 2017

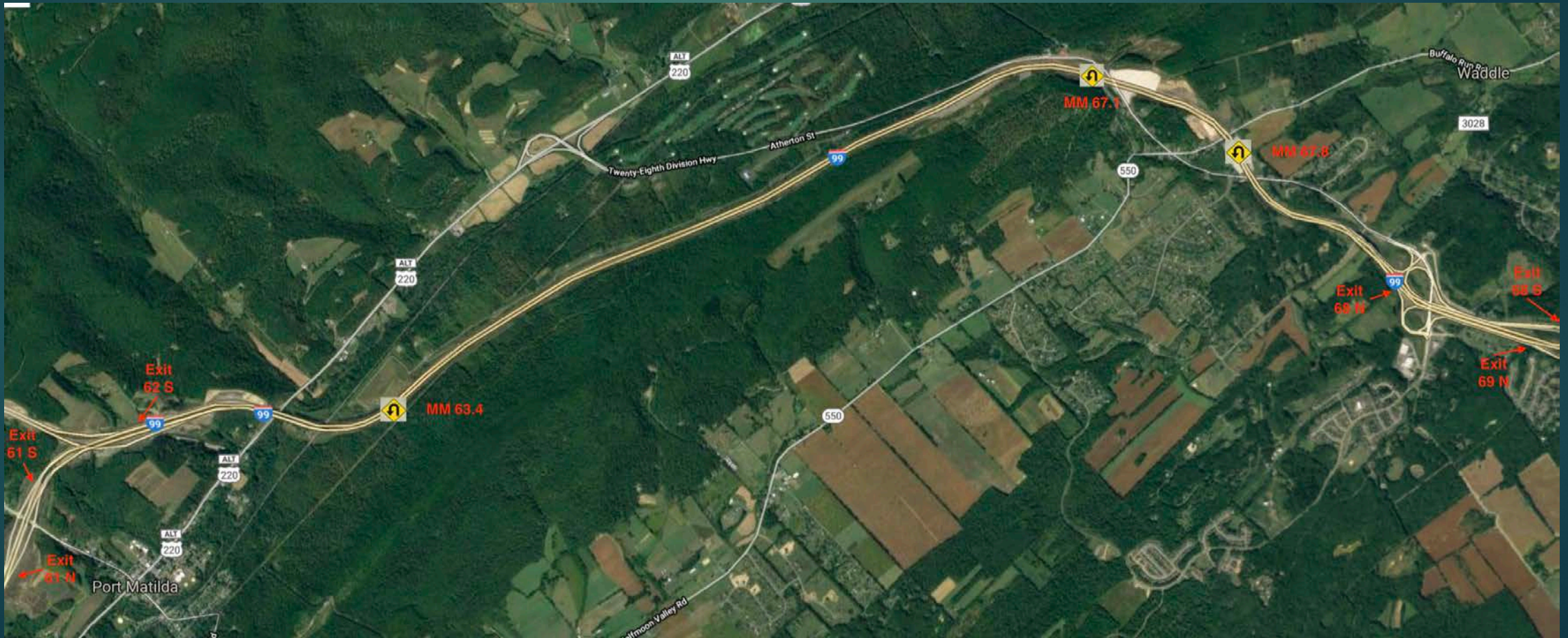


General Observations

- Speeding
 - Involuntary Speed Reduction
- Distracted Driving
 - Involuntary Device Disable
- Education
- Enforcement
- Towing
 - Proximity (Time to Actually Get on Scene)
 - Performance Metrics
 - Complaints/Feedback

Expressway Observations

- Advanced Warning Challenges
 - Encourage “Best Access” Company Dispatching



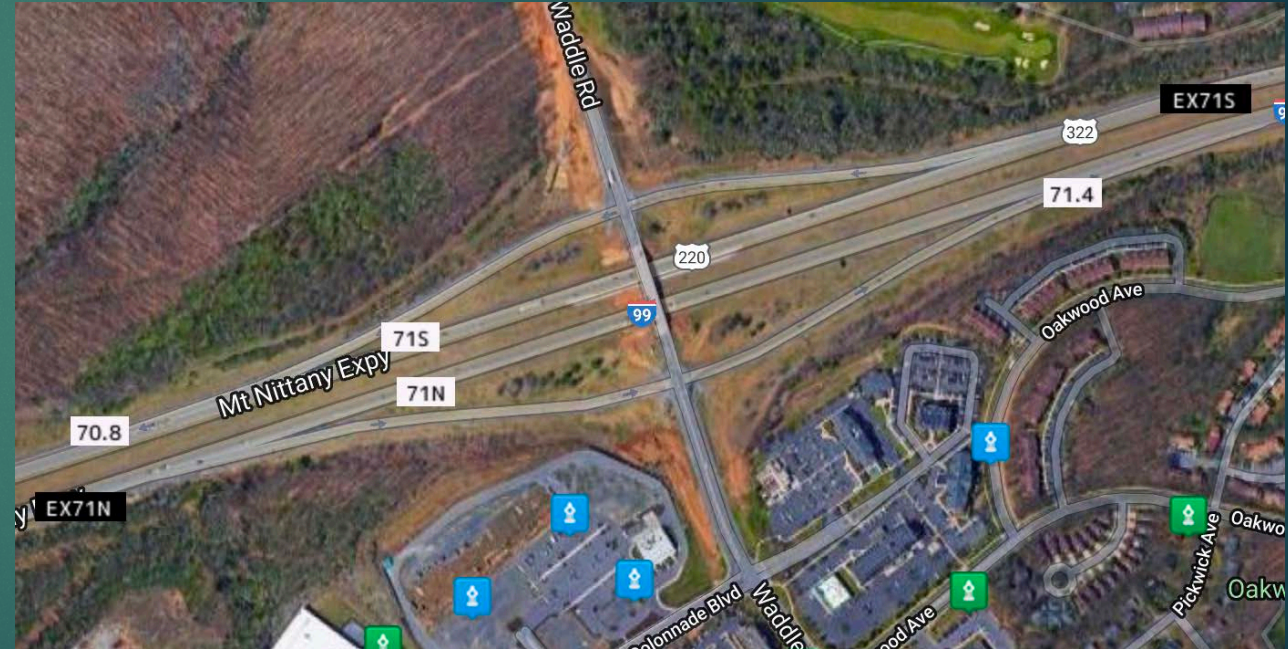
Expressway Observations

- Interchange Identification/ Ramp Identification Challenges



Expressway Observations

- Actual Mile Markers versus Exit Numbers



Expressway Observations

- Bridge Markings
- Non Interstate Mile Markings



Expressway Observations



Flash Icing/Snow Squalls

All Roadways

- Minimum Working Envelopes of Emergency Vehicles
 - Fire Engine: 16 feet
 - Aerial Truck: 26 feet
 - Ambulance: 16 feet
- Crew Numbers
 - Ambulance = 2 or 3
 - Fire Engine = 2 to 6

Secondary Road Observations

- Through Streets, Development Timing



Secondary Road Observations

- Traffic Calming



Secondary Road Observations

- Utility Company Responses



Secondary Road Observations

- Bridge Integrity/Posting



Secondary Roads

Trip Hazard
for
Older
Pedestrians

